

Civil CAD CONSULTANT

Express-TIP

On the Side

Q: How can I prevent InRoads' dialog boxes from collapsing automatically when an Apply button is executed?

A: In Tools>Options, select the **General** tab and toggle off **Collapse Dialog Boxes Automatically**. If you want this to be your default setting, choose **Preferences>Save**, then **Apply**. If you only want this setting for the current session, just **Apply**.

Civil CAD Consultant is an independent publication produced by CAD Productivity Incorporated ©2009

Using AccuDraw Rotating North Arrows

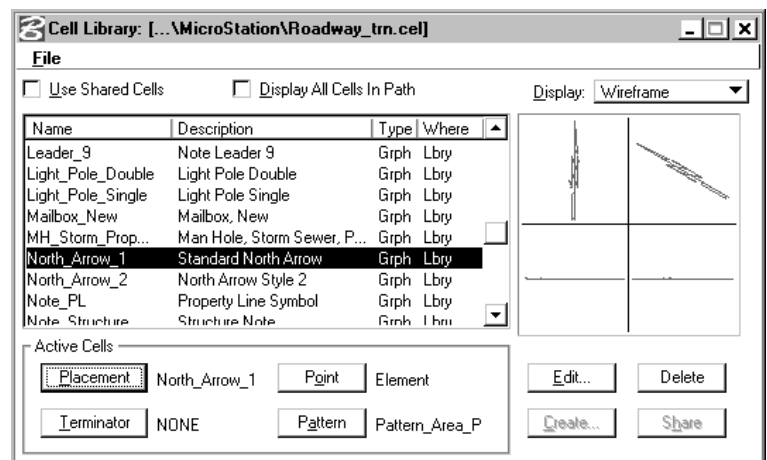
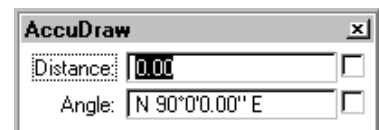
Placing North arrows on plan sheets that have been rotated requires that you set the active angle to the sheet rotation angle. If you don't know the view rotation (and don't want to take the time to determine it), let **AccuDraw** figure it out for you. Okay, we know. It seems like when it comes to MicroStation, you're either an **AccuDraw** person or you're not. If you fall in the camp that chooses to ignore **AccuDraw**, you may want to reconsider and turn it on for this handy time-saving tip.

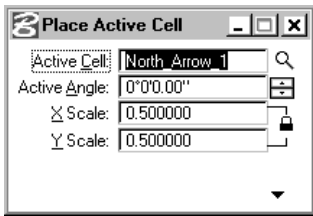
1 Start MicroStation and open your file/model that has been rotated.

2 Start **AccuDraw**.

3 Attach the cell library containing your

North arrow cell to your active placement cell.

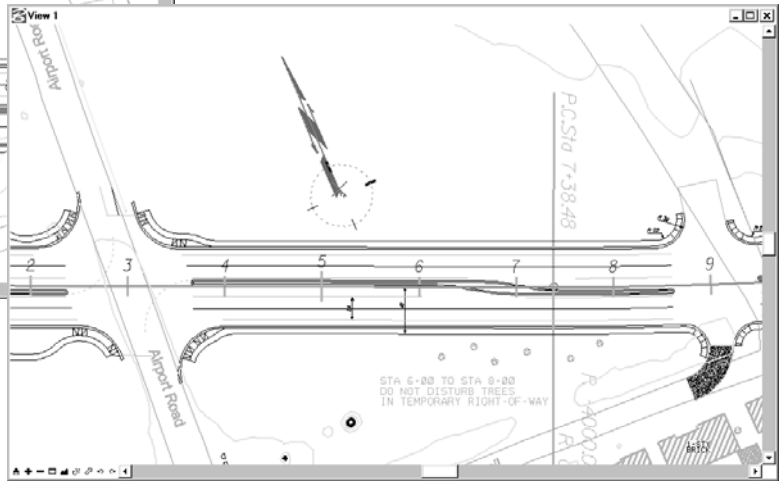
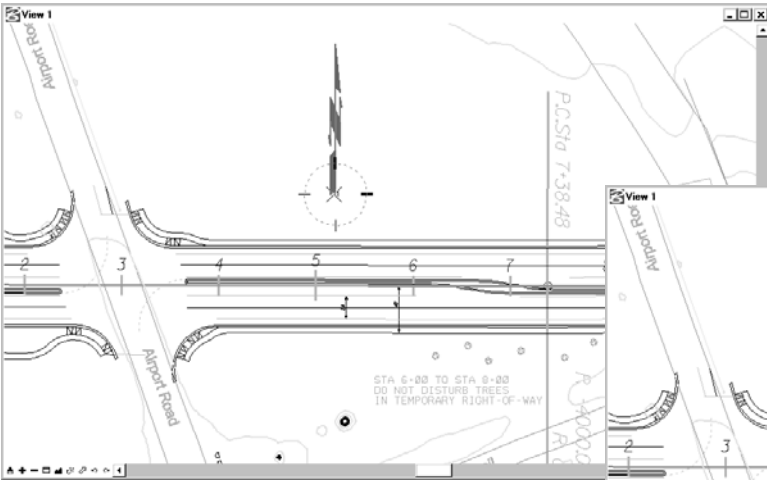





4 Select the place cell command and scale the cell as necessary.

The cell is attached to your cursor at the current active angle of the design file.

5 Set the focus to **AccuDraw**'s keyin box, then press **T** on the keyboard to rotate **AccuDraw**'s compass to the original top view of the model. This allows you to place the cell true North.



6 To rotate **AccuDraw**'s compass back to the view, press **V**.

There are several other keyboard shortcuts for using **AccuDraw** and rotating the compass. For example, the **RQ** (Quick Rotate) shortcut allows you to rotate the compass to the angle of any line by snapping on two points. This is great for placing cells perpendicular or parallel to other elements. For a list of all available shortcuts, set the focus to **AccuDraw** and press the **?** key. 

Our clients are talking about us.

“The workbook is first class!”

“Instructor has all the qualities needed to be effective.”

“Knowledge of material and ability to answer questions were exceptional.”

“Very well organized in content and presentation.”

“CAD Productivity always delivers the information we need.”

“Excellent job of presenting material.”

“One of the most effective professional trainers I have ever witnessed!”

“CAD Productivity has once again provided excellent, informative and well-paced instruction.”

Find out why they're raving
Visit us at www.cadprodinc.com or call 615.255.7440
Nothing to lose; lots to gain

**REGISTER EARLY
AND SAVE!**

Templates and Roadway Designer

Become more productive than you ever thought possible with these two *critical* parts of InRoads

August 3-6, 2009

Nashville, TN

visit
www.cadprodinc.com
for details